

Assessment of eco-environment vulnerability in Karst region

Dongjie GUAN, Kazuyuki WATARI, Hidetoshi FUKAHORI, Weijun GAO

(Faculty of Environmental Engineering, The University of Kitakyushu, Japan, guandongjie_2000@163.com
d7640201@hibikino.ne.jp)

1 ABSTRACT

The Karst area is typical eco-environmental vulnerable area, where insufficient farmland and serious soil degeneration offer vulnerable ability to endure the natural disasters. Consequently, vulnerable eco-environment can't coordinate with rapid social economic development, which leads to its feeble sustainable developmental ability. The Karst area of Chongqing in China as a study case, this paper sets up 13 influencing factors of eco-environment vulnerability to be assessment indexes, including earth surface of carbonate rock salt, area of mountainous region, area of slopping upland farming, degree of rock desertification(classified by gently, moderately, seriously), forest coverage, loss area of water and soil, soil erosion modulus, slip volume density, cultivation index, farmland area per capita, agriculture population density. Subsequently, the paper uses analytic hierarchy process (AHP) to endow indexes weight, and proposes an assessment model by using fuzzy mathematics method to analyze and assess the eco-environment vulnerability of Karst area. Finally, the assessment results are rankly divided. Results indicate: there are 3 potentially vulnerable counties, 10 gently vulnerable counties, 6 moderately vulnerable counties and 6 seriously vulnerable counties among the 25 Karst counties in Chongqing.

Keywords: Karst counties, eco-environment vulnerability, fuzzy mathematics, Chongqing

2 INTRODUCTION

China is one of most growing countries of the world Karst landform (Yuan, 1989; Wang, 2004; Su, 2002). Total area of national Karst reaches to 1.37 million km², it approximately occupies 1/7 of total national territory area; as far as the buried limestone is concerned, the area reaches to 2 million km² and it approximately occupies 1/5 of national territory total area. West south Karst area, that takes Guizhou Province as center and mainly spreads over Yunnan, Guizhou, Guangxi, Sichuan and Chongqing, is approximately 550,000 km², occupying 15.97% of national Karst area. It's one of the biggest and most intensely growing areas of Karst around global Karst pieces (Li, 2002). Meanwhile, the total population is beyond 3.9 billion in the area, nearly 1/2 of national impoverished population musters reside in the region, so it's a main impoverished area in China. The restoration and reconstruction of degeneration Karst ecosystem have always been key points to which government management and scientific researchers have paid more attention (Gogu et al., 2000; Weltzin and McPherson, 2000; Enrico and Laura, 2002). In recent years, information technology has played a more and more important role in environment protection fields. Spatial information technology, especially GIS, has become a more significant instrument for environment management and analysis in scientific researches. At present, GIS technology has been widely applied in natural resources management and eco-environment assessment (Li et al.,2007; Oh,2001;Van and Wiedemann,2003;Lubos et al.,2006; Stevens,et al.,2007; Christina and Klaus,2004; Matejcek et al.,2003; Arampatzis et al.,2004; Wu,2002; Ron and Jakka,2003). Undoubtly, GIS-based researches on Chinese Karst eco-environmental are worthwhile and representative. But previous research focuses mainly concentrated on the Karst areas in Guizhou, Yunnan and Guangxi province(Zhang et al.,2004; Qin et al., 2005; Chen et al.,2001).For Chongqing Karst, only preliminary studies on restoration and reconstruction of degenerating Karst ecosystem were presented (Li,2004; Wang et al., 2003;Guan and Su,2006). This paper picks up 25 Karst counties of Chongqing as the examples, and applies quantity classification method to establish an assessment index system by reasonably selecting ecological environmental frailty influencing factors. In the index system, indexes are endowed weight by analytic hierarchy process (AHP) (Fahmy, 2001); then, an assessment model is established by fuzzy mathematical generalization (Burrough, 1987; Borrego, 2006; Cheng, 2004); finally, GIS-based rank division is accomplished. The present work is orientated to explore quantitative assessment method of ecological environment frailty of Karst area in Chongqing and rank the ecological environment frailty, provide the basis for restoration and reconstruction of degeneration Karst ecosystem, utilization of land structure optimization in Chongqing. More importantly, proposed methodology of GIS application, AHP and fuzzy mathematical generalization in eco-environmental vulnerability assessment has common sense and expansibility for other study cases.

3 STUDY AREA

The Chongqing Karst area (containing carbonate rocks clamp detritus petrographic area) is about 41,400 km², accounting for 51% of the whole rural area, it mainly disseminates in Nanan, Banan, Beibei, Yubei, WanSheng, Qijiang, Nanchuan, Jiangjin, Yongchuan, Chengkou, Wuxi, Wushan, Zhongxian, Yunyang, WanZhou, Shizhu, Fengdu, Fengjie, Fuling, Wu Long, Pengshui, Qianjiang, Yongyang, Xiushan, Kaixian (Fig.1). Similar to Mediterranean Sea, it belongs to subtropics exposed dissolved Karst landscape with Karst marshland - mound peak corroded -erosion, which is characteristic of Karst marshland, funnel and Karst knoll, low-middle Mountain. In the pure stratum (entirety is phenol salt crag area), the Karst is foliation distribution, its growth is positive; in the inter-bedded stratum, Karst often takes on the belt-shaped distribution; in the m-stratum, the Karst distribution only appears several isolated bands or fragments. Within urban area, land resource in limestone mountainous area is primarily stone hillside. Therefore, it is evident in the area: 1. hypsography is big; 2. terrain is steep; 3. geological function of endo-exo agent is intensive; 4. mountains are interlock-distributed with canyons, peak clumps and marsh lands. These characteristics induce that water and soil resource easily drain in the area, water loss and soil erosion are serious, vegetation appears reverse succession, coverage of forest is low, capability of conservation water is bad, ability of ecological environment anti-interference is reduced. As a result, a vicious circle of “population increase-cultivated land grow-forest degeneracy- land petrified” is formed.

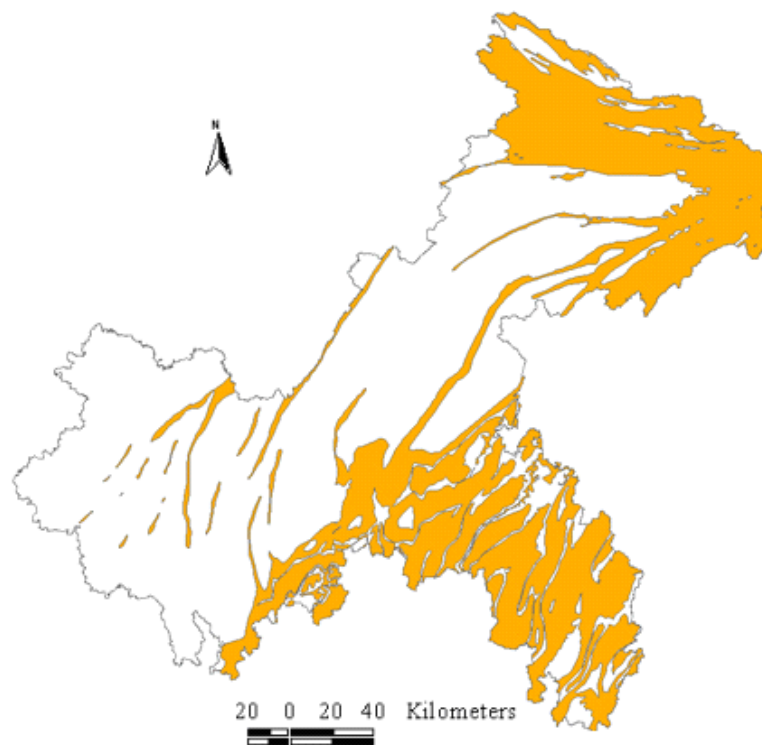


Fig.1 Spatial distribution of Karst geomorphic coverage in Chongqing

4 ASSESSMENT METHOD

4.1 Elaborating the assessment index

The Karst environment is a unique ecological environment system, where energy circulation and variation of carbon matter are extremely intense and prompt (Su et al., 2002). The system has a series of ecological frailty characteristics, including low environmental capacity, small creature amount, high variation sensitivity of ecosystem, weak ability of anti-interference, inferior stability. Karst environment vulnerability are so sophisticated that it's necessary to establish a unified assessment index system for quantizing the vulnerability degree of different Karst areas, then one would have a whole objective understanding and assessment for the integral Karst ecological environment frailty. As mentioned above, the paper initiating from natural disturbance and human disturbance of Chongqing Karst area, takes 13 influencing factors as assessment indexes, which consists of earth surface of carbonate rock salt, area of mountainous region, area of sloping upland farming, degree of rock desertification (classified by gently, moderately, seriously), forest

coverage, loss area of water and soil, soil erosion modulus, slip volume density, cultivation index, per capita farmland area, density of agriculture population, to establish an assessment index system (shown in Fig.2). Current value of assessment index of eco-environment vulnerability of 25 Karst counties in Chongqing is shown in table 1.

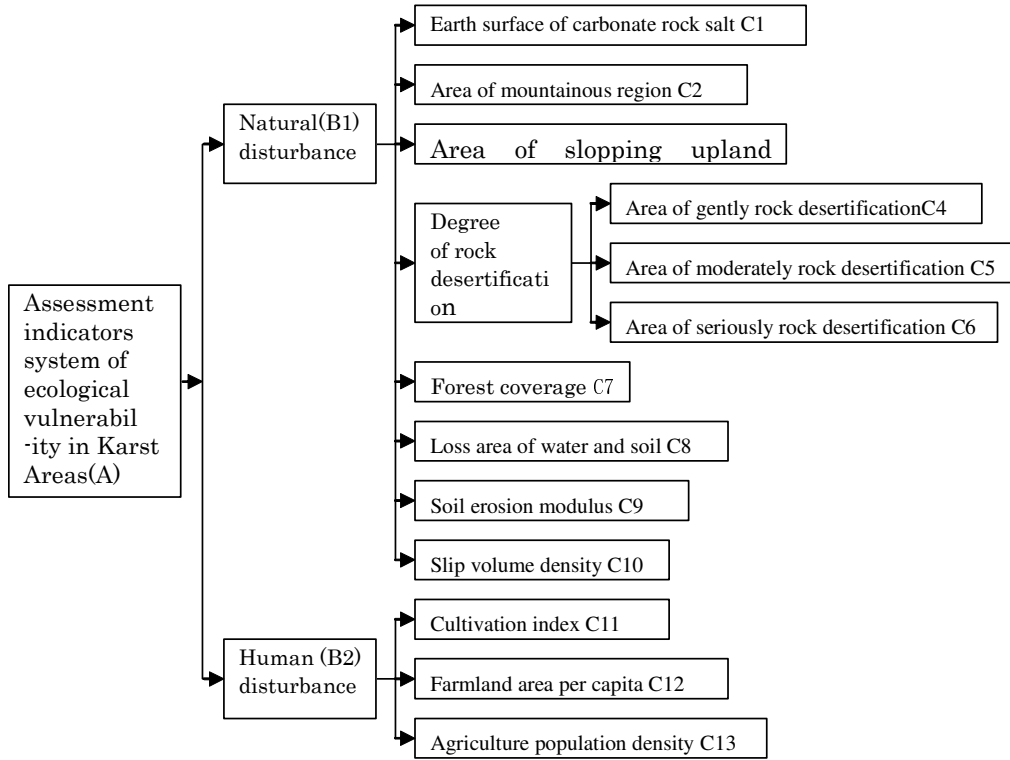


Fig.2 Assessment indexes system of ecological vulnerability in Chongqing Karst Areas

Table 1 Current value of assessment indicators of eco-environment vulnerability of 25 Karst counties in Chongqing

	X1	X2	X3	X4	X5	X6	X7	X8	X9	X10	X11	X12	X13
Nan'an	5.24	34.09	20.3	0.84	1.06	0.62	13.7	40.31	2893	1.09	67.49	0.59	430
Beibei	6.55	41.22	16.8	2.08	6.31	4.99	18.5	47.42	4634	1.63	67.04	1.19	467
Yubei	13.51	44.37	48	0.35	6.63	2.26	11.1	58.42	4130	1.6	75.39	2.03	382
Bannan	11.39	40.24	7.7	0.11	4.59	0.96	15.7	61.51	2695	0.78	78.92	2.52	330
Wangsheng	46	85.88	15	0.79	17.05	10.48	35	59.88	3108	3.27	46.08	1.45	258
Qijiang	16.56	76.38	20.2	0.63	1.06	1.03	17.4	62.50	4092	2.68	54.83	1.89	340
Nanchuan	64.4	75.71	14.4	2.39	19.31	10.66	32.9	62.12	4081	0.41	31.82	1.93	211
Jiangjin	1.83	31.02	11.1	0.07	2.27	0.08	21.2	53.79	3421	3.57	47.35	1.56	340
Yongchuan	0.92	16.44	13.8	0.02	0.76	0.05	16.54	71.05	1802	0.01	70.72	1.60	512
Wushan	38.94	92.43	28.9	5.81	35.36	41.32	31.9	76.46	3705	23.27	25.36	1.93	178
Chengkou	54.91	98.56	59.1	5.08	2.11	44.19	42	52.61	6575	0.72	23.99	5.53	62
Wuxi	92.1	90.75	55.4	2.94	25.2	41.9	32.6	51.86	6516	0.98	27.04	3.23	126
Zhongxian	0.65	54.17	39.8	0.01	1.23	0.82	15.6	79.46	3761	15.41	60.61	2.05	380
Yunyang	9.4	86.56	64.5	0.58	6.97	9.95	23.9	83.5	4426	15.69	41.54	1.79	313
Wanzhou	6.08	68.80	41.3	1.08	5.31	4.99	14.8	76.29	5054	32.16	52.2	1.61	359
Shizhu	28.55	75.08	22.1	1.51	9.94	7.64	27.19	77.47	3807	7.61	33.64	3.00	147
Fengdu	33.38	76.55	10.8	0.82	15.45	10.31	20.8	66.06	4088	15.72	46.83	2.63	267
Fengjie	45.75	90.36	28.5	5.08	26.16	24.52	24.9	69.49	5110	24.75	28.33	1.77	220
Fuling	28.17	51.28	10.1	0.69	15.59	5.82	21.2	64.88	4443	6.02	48.45	1.93	275
Wulong	84.44	91.05	16.6	9.42	26.65	23.45	31.5	66.98	4798	9.95	28.51	3.14	119
Pengshui	99.64	91.84	48.4	5.81	35.39	20.69	23.7	70.04	4811	0.2	29.45	2.77	145
Qianjiang	97.86	91.42	67.8	1.75	18.05	10.59	17.8	78.95	4517	1.95	28.04	2.09	179
Yongyang	99.25	90.53	20.9	6.35	33.63	12.5	20.2	46.04	4497	3	23.89	2.53	131
Xiushan	88.02	76.17	76.4	5.25	26.53	13.4	22.7	56.5	4391	0.24	27.94	1.42	219
Kaixian	19.87	69.96	43.3	0.83	10.45	13.35	20.8	68.14	5505	14.07	42.92	1.70	345

4.2 Assessment standard

At present, there is no unified classification standard and assessment basis for ecological environment frailty of Karst area (Jing et al., 2003; Tian et al., 2005 ;). The paper divides frailty rank of indexes into 5 frailty ranks (potentially frail, gently frail, moderate frail, seriously frail, extreme frail) according to D-value division between maximum value and minimum value of each index (Table1). Assessment standard includes forward-index (bigger the index value is, bigger the frailty is) and negative-index (smaller the index value is, bigger the frailty is). Forward-index standard adopts the value attained by adding minimum value of each index to half of D-value division as standard value of potentially frailty, and adopts the value attained by minimum value of each index minus half D-value division as limited value of extremely frailty, the middle three ranks are equidistantly defined between the two attained values; negative-index goes reverse (shown in table2).

Table 2 Grading standard for assessment indexes of ecological vulnerability in Chongqing Karst Areas

Factor	Index number	Vulnerable grades				
		Potentially vulnerable□	Gently vulnerable□	Moderately vulnerable□	Seriously vulnerable□	Extremely vulnerable□
Natural disturbance	C1	10.55	30.35	50.15	69.95	89.74
	C2	24.65	41.07	57.49	73.91	90.33
	C3	14.57	28.31	42.05	55.79	69.53
	C4	0.91	2.83	4.71	6.59	8.47
	C5	4.22	11.15	18.08	25.01	31.94
	C6	4.45	13.28	22.11	30.94	39.77
	C7	38.91	32.73	26.55	20.37	14.19
	C8	44.63	53.27	61.91	70.55	79.19
	C9	2279.3	3233.9	4188.5	5143.1	6097.7
	C10	3.23	9.66	16.09	22.52	28.95
Human disturbance	C11	29.48	40.47	51.45	62.44	73.43
	C12	5.04	4.05	3.06	2.07	1.08
	C13	107	197	287	377	467

4.3 Assessment model

4.3.1 Endow index weight

Because various indexes play different roles in the index system, their influencing extents to ecological environment are discriminative. And weighting assessment method is usually utilized to definite the influence discrepancy. At present, a lot of researches on weight definite question have been carried on, among them weight is defined according to either researcher's experience and subjective judgment or all kinds of mathematics methods (Li et al., 2004; Xiao et al., 2005). This paper uses analytic hierarchy process (AHP) to determine index weight of ecological environment frailty in Chongqing Karst. AHP is a simple systematic engineering method to quantitatively analyze non-quantitative objects. It cannot only adequately consider the researcher's subjective judgment during the quantitative and/or qualitative analysis, but also

express the complex system in a hierarchic structure from interrelation between inside and outside of the system, which contributes to make the decision-making process more systemic, numerical and modeling by analyzing step by step. Due to its ability of assigning proper weights to various factors of complex system, AHP is also called as an analytic multi-level value process. As a complex system with multi-subjects and multi-levels, eco-environment system is suitable to employ AHP (Li et al., 2007) as assessment method. The detailed analytic process is as follows.

1 Establish comparison matrix B2

Layer B is broken down into Layers C to establish the pair-wise comparison matrix. Relative importance of C1, C2 ...,C13 is analyzed by Delphi method, also so-called Expert Judgment. During the research, we invite experts in ecological fields to give the relative importance of each factor, respectively, then universally analyze all the opinions, and finally, gain the rank of relative importance for each factor. The established comparison matrix of human disturbance is seen in Table 3.

Table 3 comparison matrix of human disturbance

B2	C11	C12	C13
C11	1	5/9	1/3
C12	9/5	1	3/5
C13	3	5/3	1

2 Calculate the product of every row M_i

$$M_i = \prod_{j=1}^m C_{ij} \quad (i=1,2,\dots,m)$$

3 Get the cubic root of M_i

$$\beta_i = M_i^{\frac{1}{m}}$$

3 Get the weight of C11, C12 and C13

$$w_i = \frac{\beta_i}{\sum_{i=1}^m \beta_i} \quad (i=1,2,\dots,m) \quad w_i=(0.1386,0.2733,0.5881)$$

4 Calculate the maximum eigenvalue

$$\lambda_{\max} = \frac{1}{m} \sum_{i=1}^m \frac{(Bw)_i}{w_i} \quad (\lambda_{\max} = 3.0651)$$

5 Use $CR=CI/RI$ to carry on consistent test. $CR \leq 0.10$ means that the consistence of this matrix is acceptable.

$$\frac{\lambda_{\max} - n}{n - 1}$$

In the equation, $CI = \frac{\lambda_{\max} - n}{n - 1} = 0.03256$, RI is average random consistence index. When $m=3$, $RI=0.58$, CR (random consistence index) $=0.0561 \leq 0.10$, weight of assessment indexes for human disturbance is acceptable. (Table 4)

Table 4 Weight of assessment indexes for human disturbance of eco-environment vulnerability (B2)

Index	C11	C12	C13
Weight	0.1386	0.2733	0.5881

Similarly, weight of assessment factor for natural disturbance is gotten. (Table 5)

Table 5 Weight of assessment indexes for natural disturbance of eco-environment vulnerability (B1)

Index	C1	C2	C3	C4	C5	C6	C7	C8	C9	C10
Weight	0.181	0.045	0.136	0.022	0.068	0.136	0.090	0.106	0.106	0.106
	9	4	3	8	3	3	9	1	0	0

4.3.2 Calculation of eco-environment frailty

Ecological environment frailty has some fuzziness in the Karst area. That is to say, concrete ecological environment should be confirmed to be neither absolutely frail nor absolutely stable, membership relationship of varying extent is only proposed relative to some frail standard. Therefore, vulnerability assessment for Chongqing Karst area may be dealt as a fuzzy problem. Membership degree to some level frailty is mainly calculated by establishing membership function according to current value of assessment index (Table 3).

The assessment index is divided into forward-index and negative-index, their membership degree formula are different. For forward-index, its formula is as follows:

$$x_i < s_{i,1}, \quad r_{i,1} = 1, \quad r_{i,2} = r_{i,3} = r_{i,4} = r_{i,5} = 0 \tag{1}$$

$$s_{i,j} \leq x_i \leq s_{i,j+1}, \quad r_{i,j+1} = \frac{x_i - s_{i,j}}{s_{i,j+1} - s_{i,j}}, \quad r_{i,j} = 1 - r_{i,j+1} \quad (j = 1, 2, 3, 4) \tag{2}$$

$$x_i > s_{i,5}, \quad r_{i,5} = 1, \quad r_{i,1} = r_{i,2} = r_{i,3} = r_{i,4} = 0 \tag{3}$$

Calculation method of negative-index membership degree is similar to that of forward-index, its formula is as follows:

$$x_i > s_{i,1}, \quad r_{i,5} = 1, \quad r_{i,1} = r_{i,2} = r_{i,3} = r_{i,4} = 0 \tag{4}$$

$$s_{i,j} \geq x_i \geq s_{i,j+1}, \quad r_{i,j+1} = \frac{x_i - s_{i,j}}{s_{i,j+1} - s_{i,j}}, \quad r_{i,j} = 1 - r_{i,j+1} \quad (j = 1, 2, 3, 4) \tag{5}$$

$$x_i < s_{i,5}, \quad r_{i,1} = 1, \quad r_{i,2} = r_{i,3} = r_{i,4} = r_{i,5} = 0 \tag{6}$$

Using above formulas, relational matrix between assessment indexes with frailty is gotten. Then assessment model of eco-environment frailty is

$$R_{i,j} = \begin{pmatrix} r_{11}r_{12}r_{13}r_{14}r_{15} \\ r_{21}r_{22}r_{23}r_{24}r_{25} \\ \dots\dots\dots \\ r_{i1}r_{i2}r_{i3}r_{i4}r_{i5} \end{pmatrix} \tag{7}$$

$$U_j = w_i \cdot R_{i,j} \tag{8}$$

In usual cases, the biggest membership degree principle is employed to analyze the fuzzy assessment result after accomplishing the assessment model, but this method has some limitations that unreasonable appraisal results would be possibly obtained if the difference among judgment objects with different rank membership degrees is not large. In order to lessen the limitation by assessment model and access the essence, the paper applies the weighted average principle for obtaining the membership rank, and analyzes result vector of fuzzy synthesis assessment.

$$B^* = \frac{\sum_{j=1}^5 U_j^2 \cdot j}{\sum_{j=1}^5 U_j^2} \tag{9}$$

Where, $r_{i,j}$ is relative membership degree of the i th index to j th level standard; x_i is current value of the i th index; $s_{i,j}$ is standard value of the i th index to j level frailty rank; w_i is the index weight coefficient of i th index; U_j is frailty of the j th level standard; B^* is the frailty, j is the frailty rank.

According to formulas of fuzzy assessment (1) ~ (9) , the paper firstly carries on frailty assessment for natural disturbance and human disturbance; then, takes assessment result as assessment factor; finally, obtains integrated rank division of ecological environment frailty in Chongqing 25 Karst counties (Fig .3).

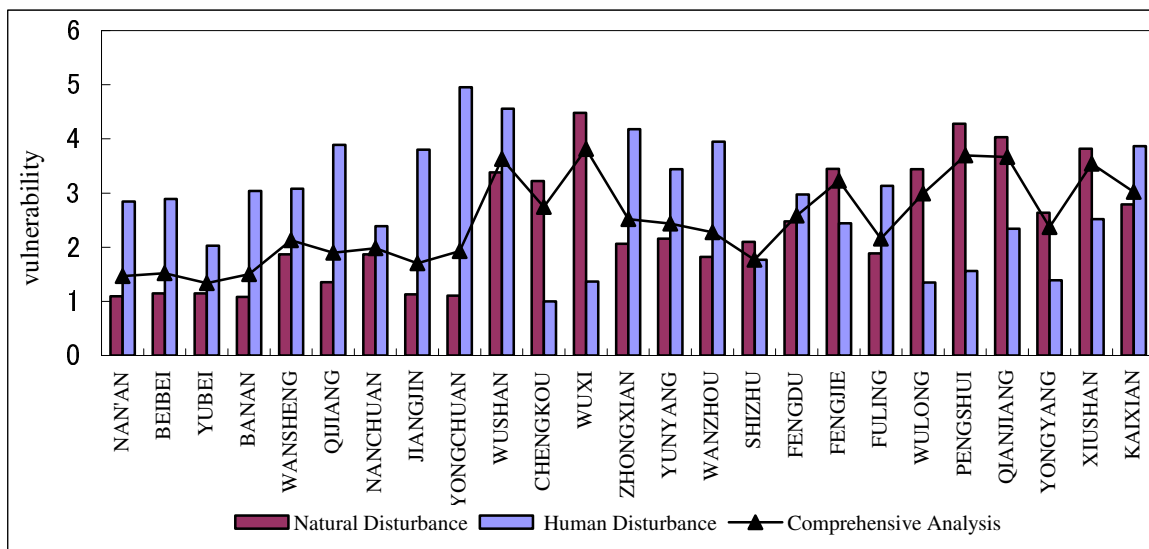


Fig. 3 Evaluation results of ecological vulnerability of 25 Karst counties in Chongqing

4.3.3 GIS-based rank division

The paper applies ArcView software as assessment tool, carries on rank division according to weighted average principle (potentially vulnerable: $B * < 1.5$; gently vulnerable: $1.5 \leq B * < 2.5$; moderately vulnerable: $2.5 \leq B * < 3.5$; seriously vulnerable: $3.5 \leq B * < 4.5$; extremely vulnerable: $B * \geq 4.5$). Rank divisions of natural disturbance and human disturbance are shown in Fig.4 and Fig.5, respectively. Rank division of eco-environmental comprehensive vulnerabilities of 25 Karst counties in Chongqing is shown in Fig.6.

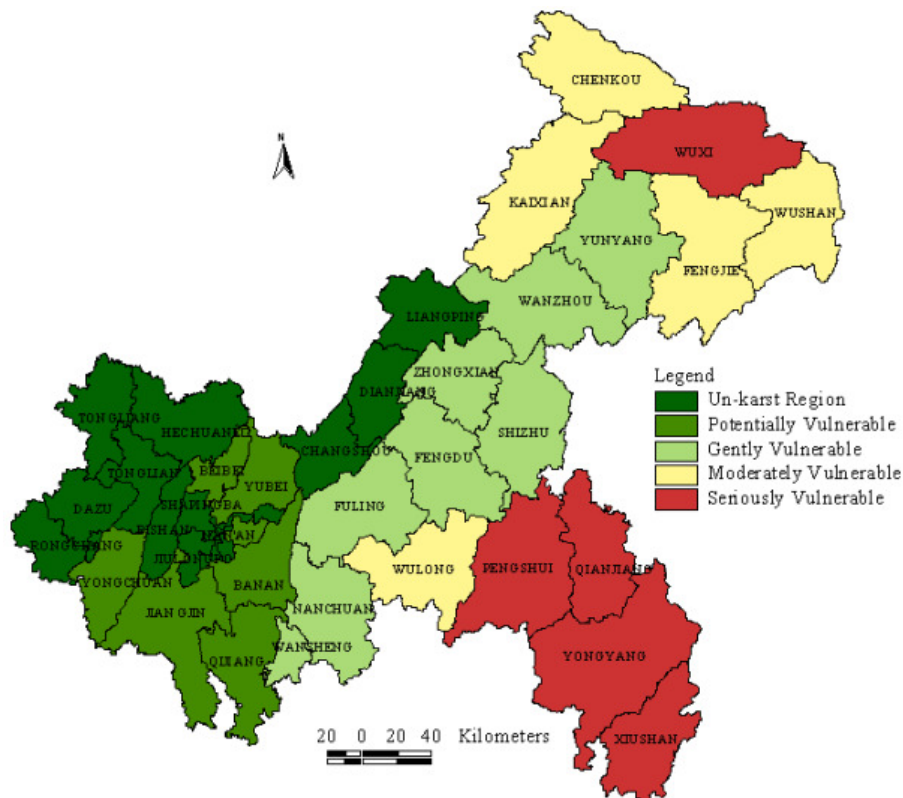


Fig.4 Rank division figure of natural disturbance vulnerability of 25 Karst counties in Chongqing

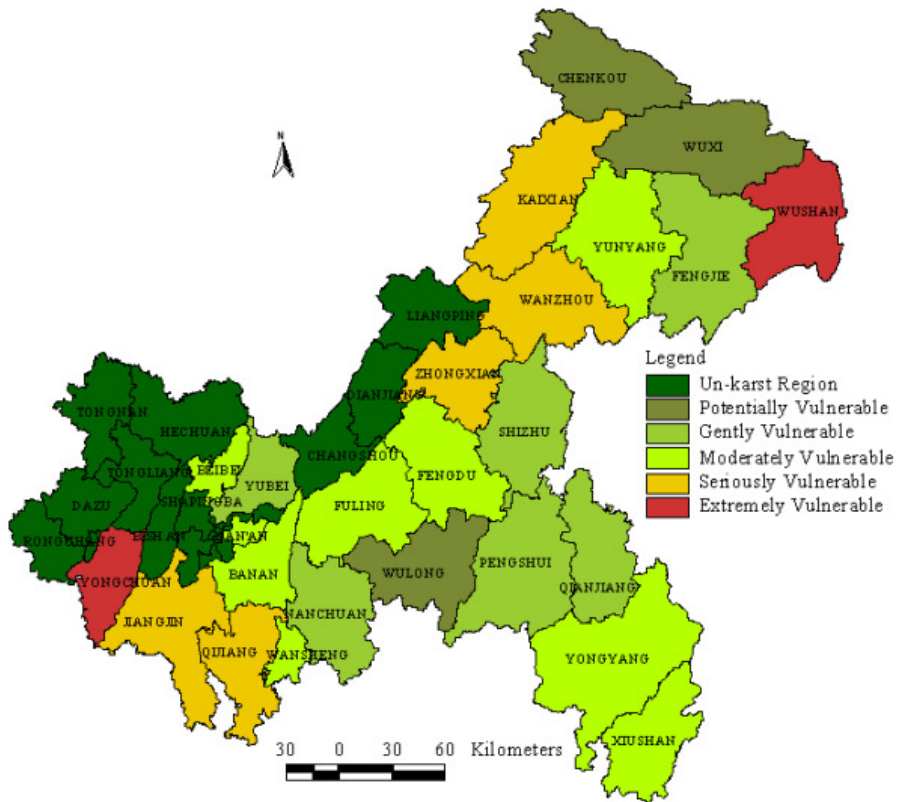


Fig.5 Rank division figure of human disturbance vulnerability of 25 Karst counties in Chongqing

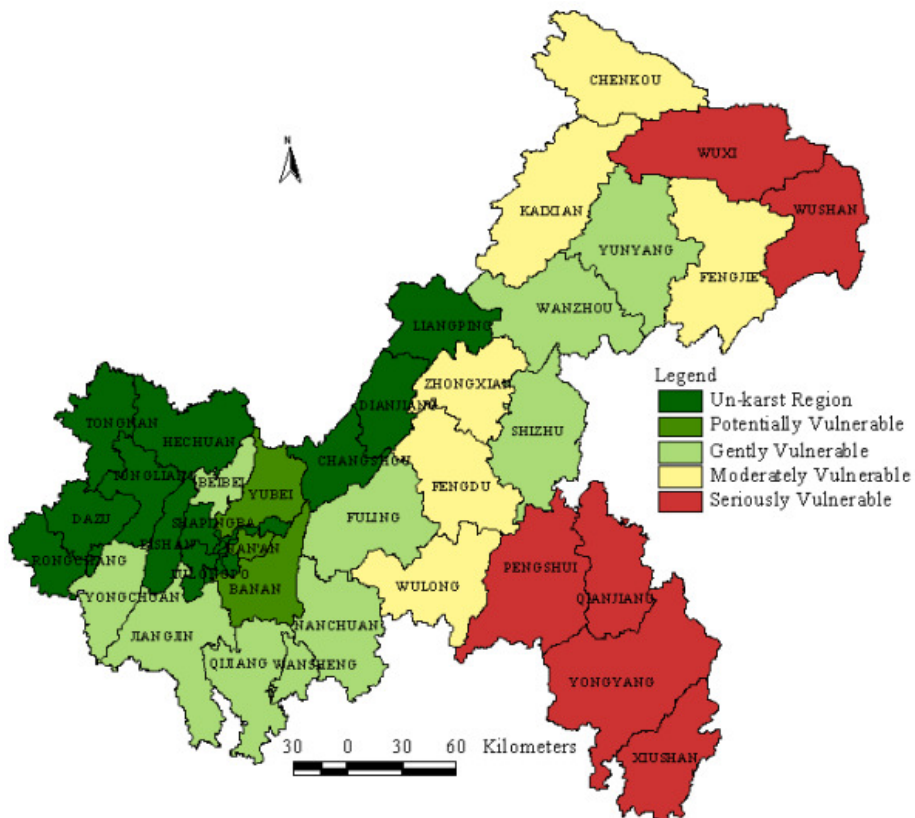


Fig.6 Rank division figure of eco-environmental comprehensive vulnerability of 25 Karst counties in Chongqing

5 RESULTS

The comprehensive rank division results indicate that there are 3 potentially vulnerable areas, 10 lightly vulnerable areas, 6 moderately vulnerable areas, and 6 seriously vulnerable areas in the 25 Karst areas of Chongqing.

- Potentially vulnerable area includes 3 areas (Nanan, Yubei, and Banan). Its area is 3561.11km², accounting for 5.26% of total area. The region is mainly composed of cross-belt of city and countryside, where rural ecosystem and agricultural ecosystem are coexisted, natural environmental condition is relatively superior, earth surface of carbonate rock salt is slight (<13.51%), statuses of forest and vegetation are better, peasant's income is stable, development level of economy is higher. However, runoff of ground surface is rich, intensity of rain is big, soil erosion is serious (area > 40.31%), soil erosion (modulus >3239.33t/ km².a) is moderate, the geological disasters frequently occur (primarily landslide and danger crag), so it belongs to potentially vulnerable area.
- Gently vulnerable area includes 10 areas (Beibei, Qijiang, Jiangjin, Yongchuan, Wan Sheng, Nanchuan, Shizhu, Yunyang, Fuling and Wanzhou), the area is 23931.04km², accounting for 35.34% of total area. In this region, natural environmental condition is better, forest coverage is higher, and it has the obvious function of self-control water source and accumulation and regulation of hydrology. However, mountainous area is big, rainfall is big and centralized, and soil erosion is serious. In addition, the humanity activity is frequent, index of cultivation is higher, and land reserve resource is insufficient. So this region belongs to mild vulnerability.
- Moderately vulnerable area includes 6 areas (Fengjie, Kaixian, Zhongxian, Chengkou, Fengdu and Wu Long), its area is 19, 318 km², accounting for 28.52% of total area. In this region, geologic structure is complex, slope stability is bad, landslide risk is big (landslide bulk density> 134,800 m³/km²). And, intensity of soil corrosion is high (average mold is 4,973 t/ km².a), soil layer is superficial, land productive is low, chemical fertilizer is emphasized instead of organic fertilizer, agriculture strongly depends on chemical fertilizer, agricultural pollution is serious, potential harm to environment is big; also, drought and flood disasters are frequent, agricultural production is extremely unstable, economical development is slower. So this region belongs to moderate vulnerability.
- Seriously vulnerable area includes 6 areas (Pengshui, Wushan, Wuxi, Qianjiang, Yongyang, Xiushan), its area is 20,911 km², accounting for 30.88% of total area. In this region, middle-low mountain area occupies above 96% of breadth area, earth surface of carbonate rock salt is large (> 50%), especially above 90% in Wuxi, Qianjiang and Yongyang. Forest coverage is low, biodiversity is reduced, soil erosion area is broad (> 63.08%). The soil is mainly composed of yellow soil and calcareous soil, rainstorm runoff is seriously due to big slope and centralized rain, it belongs to intensively erosion area (modulus >4739t/km².a). The land desertification is serious; land area above moderate sensitivity accounts for 53%, highly sensitive area approximately occupies 23.4%. Moreover, topography is rugged, transportation is unenlightened, contradiction of human-land is serious, particularly proportion of dry slope farming is big (> 44.07%), economy is backward. So this region belongs to serious vulnerability.

6 CONCLUSIONS

The paper takes 25 Karsts areas in Chongqing as examples, sets up a set of comprehensive and scientific index system by reasonably selecting influence factors of ecological environmental frailty of Karst area, defines an objective and accurate graduation standard, and uses analytic hierarchy process method(AHP) to quantize weight of each index, then establishes fuzzy mathematical assessment model, constructs judgment matrix, finally, carries on frailty rank division based on the GIS technology. It provides a reference for restoration and reconstruction of degeneration Karst ecosystem and optimization of land utilization structure in Chongqing.

The paper carries on quantitative assessment for ecological environments of 25 Karst counties in Chongqing using suggested index system and assessment method, ecological environmental vulnerability is relatively divided into four gradations. There are 3 potentially vulnerable counties, 10 gently vulnerable counties, 6 moderately vulnerable counties and 6 seriously vulnerable counties. The assessment results basically conform to actual situation of ecological environment vulnerability in Chongqing Karst. In addition, assessment method for ecological environment vulnerability of Karst area is reasonable and feasible.

7 ACKNOWLEDGMENTS

The study was funded by National Basic Research Program 973(No. 2006CB403200) and National Natural Scientific foundation of China (No.40261002, No.40561006.)

8 REFERENCES:

- ARAMPATZIS, G., Kiranoudis, C.T., Scaloubacas, P., et.al.,2004.A GIS-based decision support system for planning urban transportation policies.European Journal of Operational Research.152,465-475
- BORREGO, S., Martins, H., Tehepel, O., Salmim, L., Monteiro, A., Miranda, A.I.,2006. How urban structure can affect city sustainability from an air quality perspective. Environ. Model.software. 21, 461-467.
- BURROUGH,P.A., 1987, Fuzzy mathematical methods for soil survey and land evaluation.Journal of Soil Sciences. 40,477-492
- CHEN, H.Y., Yang,Y., Hu,X.H., et al.,2001. Effective utilization of rain water resources in Karstic Mountain Region-Taking Maguan underground reservoir in Puding of Guizhou as a case. Journal of Natural Resources, 16(6),505-510(in Chinese).
- CHENG, J., Masser, I., 2004. Understanding spatial and temporal processes of urban growth: cellular automata modelling. Environment and Planning B: Planning & Design.31,167-194.
- CHRISTINA, G.C., Klaus, S.,2004.Are urban green spaces optimally distributed to act as places for social integration? Results of a geographical information system(GIS) approach for urban forestry research..Forest Policy Econ.6,3-143.
- Enrico, F., Laura, G.V.,2002. Evaluation of environ -mental degradation on northern Ethiopia using GIS to integrate vegetation, geomorphological, erosion and socio-economic factors. Agriculture Ecosystems & Environment.313-323.
- Fahmy, H.M.A., 2001. Reliability evaluation in distributed computing environments using the AHP. Comput. Networks 36, 597–615.
- GUAN, D. J., Su, W. C., 2006. Study on GIS-based eco-environmental vulnerability assessment of KARST region in CHONGQING. Carsologica sinica. 25(3),211-219(in Chinese).
- GOGU, R., Dassargues, A., 2000. Current trends and future challenges in groundwater vulnerability assessment using overlay and index methods. Environment Geology.39 (6), 549-559.
- JING,J. L., Chen,Z.H., Hu,C., et. al., 2003. Study on eco-environment fragile evaluation of Karst Mountains in Southwest China. Geological Science and Technology Information. 22(3),95-103(in Chinese).
- LI,Y.B.,Gao,M., Xie,D.T.,et. al.,2004.Land types and evaluation on Karst Mountain Regions of Chongqing. Southwest China Journal of Agricultural Sciences.17(6).750-754(in Chinese).
- LI,Y.B., Hou,J.Y., Xie, D.T., 2002.The recent development of research on Karst ecology in Southwest China. Scientia Geographica Sinica. 22(3),365-370(in Chinese).
- LI, Z.W., Zeng,G.M., Zhang, H., et al.,2007. The integrated eco-environment assessment of the red soil hilly region based on GIS— A case study in Changsha City, China.Ecol.Model.202,540-546.
- LUBOŠ, M., Pavel, E.,Zbyněk J.,2006.A GIS-based approach to spatio-temporal analysis of environmental pollution in urban areas: A case study of Prague’s environment extended by LIDAR data. Ecol.Model. 199,261–277.
- MATEJICEK, L., Benesova, L., Tonika, J., 2003. Ecological modeling of nitrate pollution in small river basins by spreadsheets and GIS. Ecol. Model. 170, 245–263.
- OH, K., 2001.LandScape Information System: A GIS approach to managing urban development.Landscape Urban Plann.54,79-89.
- QIN,X.Q., Qiang,Z.C., 2005. An assessment of eco-environmental vulnerability in Karst counties of Guanxi. Earth and Environment.33(2),45-51(in Chinese).
- RON,S.,Jakka, J.,2003.A GIS-based multi-scale approach to habitat suitability modeling. Ecol.Model.169,1-15.
- STEVENS, D., Dragicevic, S., Rothley, K.,2007.iCity: A GIS-CA modelling tool for urban planning and decision making. Environ. Model.software.22,761–773.
- SU,W.C., 2002. Optimal mode and countermeasure of desertification regulation in southwestern China. Journal of Soil and Water Conservation.16(5),24-27(in Chinese).
- SU, W.C., Zhu,W.X., Xiong,K.N.,2002.Stone desertification and eco-economics improving model in Guizhou Karst mountain. Carsologica.Sinica.21(1),19-25(in Chinese).
- TIAN,Y.P., Liu,P.L., Zheng,W.W., 2005. Vulnerability assessment and analysis of hilly area in Southern China: a case study in the Hengyang Basin. Geographical Research.24(6), 843-852(in Chinese).
- VAN H.,A., Wiedemann, T., 2003. A monitoring tool for the provision of accessible and attractive urban green spaces. Landscape Urban Plann. 63,109–126.
- WELTZIN, J. F., McPherson, G. R., 2000. Implications of precipitation redistribution for shifts in temperate avanna ecotones. Ecology.81 (7), 1902-1913.
- WANG, L., Li,Y.B., Xie,D.T., et. al.,2003. Study on ecological degradation of Karst region in Chingqing. Environment Science of Chongqing.25(10),60-63(in Chinese).
- WU, F., 2002. Calibration of stochastic cellular automata: the application to rural-urban land conversions. International Journal of Geographical Information Sciences.16, 795-818.
- WANG,S.J., Liu, Q. M., Zhang, D. F.,2004. Karst rocky desertification in southwestern China: impact and rehabilitation. Land Degradation&Development. 15,115-121
- XIAO, R.B., Ouyang, Z.Y., Wang, X.K., 2005. Sensitivity of rocky desertification and its spatial distribution in south western China.Chinese Journal of Ecology. 24(5), 551-554(in Chinese).
- XU, F.L., Tao, S., Dawson, R.W., Li, B.G., 2001. A GIS-based method of lake eutrophication assessment. Ecol. Model.144,231–244.
- YUAN, D.X.,1989. Karst environmental system. Proceeding of the international geographical Union Study Group. Man’s Impact on Karst.149-163.
- ZHANG, D.F., Wang, S.L., Li, R.L., 2002. Study on the eco-environmental vulnerability in Guizhou Karst Mountains.Geography and Territorial Research. 18(1).77-79(in Chinese)